

STORMWATER FACT SHEET



Quick facts on...

Municipal Facility Good Housekeeping Inspections: Site Perimeter and Facility Yard



FACILITY OUTFALLS

- Know where outfalls drain to
- Check for erosion at outfall locations
- Check for signs of polluted discharge



MATERIAL STOCKPILES

- Keep stockpiles segregated
- Outdoor salt piles must be covered
- Check for signs of leaching material



FUELING STATIONS

- Know where fuel pump emergency shutoff is located
- Know where the area drains to
- Post "Do Not Top Off Tank" Labels



SPILL PREVENTION

- Check Spill Kits regularly for proper materials
- Inspect Fuel Tank Spill Sight Gage for spills & operability



DUMPSTERS

- Check lids and keep lids closed
- Check that any plugs are installed
- Check dumpster for holes and leaks



YARD STAINS

- Inspect facility yard for signs of stains
- Address stains by removing and replacing impacted gravel/dirt.



MISCELLANEOUS DEBRIS

- Dispose of outdated and expendable material/equipment
- Debris can shed rust and leak material that can pollute stormwater



WOOD PALLETS

- Stained wood pallets subjected to rain can release pollutants onto your facility yard and into your storm drains

Clean Water is a Community Effort:

Engage with Municipal Staff Colleagues to Seek Sustainable Good Housekeeping Programs

STORMWATER FACT SHEET



Quick facts on...

Municipal Facility Good Housekeeping Inspections: Inside Your Buildings



BUILDING DRAINS

- Know where they drain to
- Sweep floors regularly
- Perform and record drain cleaning



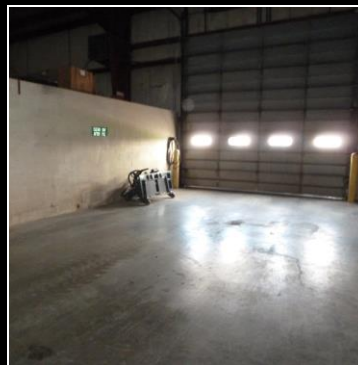
OIL SEPARATORS

- For building drains with oil separators, define maintenance schedule
- File oil separator maintenance records



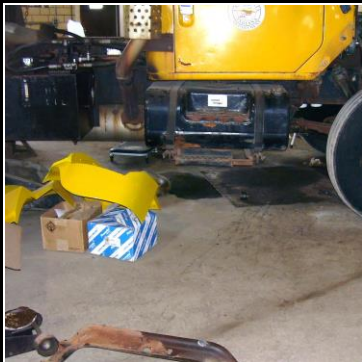
CHEMICAL STORAGE

- Do not overload spill pallets
- Keep tops of drums clean
- Pump out bottom of spill pallets



VEHICLE LOGISTICS

- Have designated areas for vehicle maintenance activities
- Have designated area for washing vehicles



PARKED VEHICLES

- Utilize spill trays and spill pads under parked vehicles to capture leaking fluids



OIL DRY

- Clean oil dry promptly to prevent tracking spills across shop floor



FLOOR STAINS

- Clean floor stains promptly
- For gravel or dirt or dirt floors, remove and replace material



LABELING

- Use labels liberally
- Labels can champion your program 24/7
- Make sure you replace worn labels

Clean Water is a Community Effort:

Engage with Municipal Staff Colleagues to Seek Sustainable Good Housekeeping Programs

